



# How to install the driver for Columbus GPS Under Windows8, 8.1,10


Suitable for:


1. V-900, V-990 Mark I (MTK2), via a standard mini-USB cable, **NOT the original charging cable.**

**Multifunction GPS Data Logger**  
**Columbus V-900 Ver. C1\_MTK2**  
Produced by Victory Co., LTD.  
  
3G0012345

**Multifunction GPS Data Logger**  
**Columbus V-990 Ver. A1\_MTK2**  
Produced by Victory Co., LTD.  
  
4G0012345

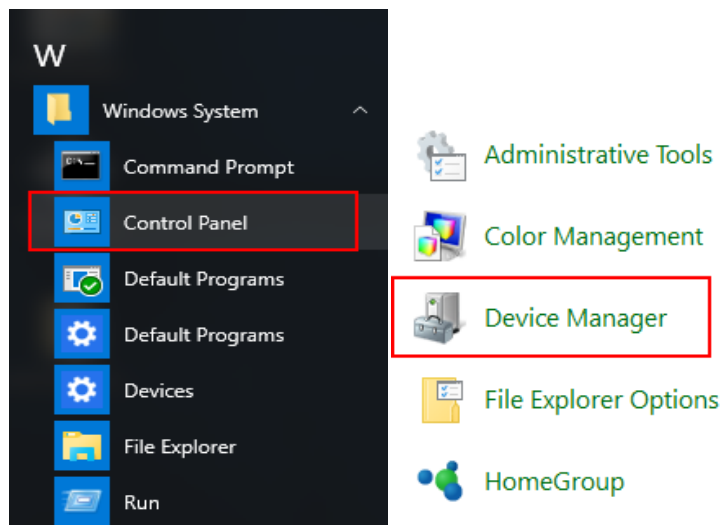
2. V-800 Mark I, V-800+.

**GPS Receiver**  
**Columbus V-800 Ver. A1\_USB**  
38,400bps,GGA,GSA,GSV,RMC,VTG  
Produced by Victory Co., LTD.  
  
5G1200001

**GPS Data Logger**  
**Columbus V-800+ A1\_32Mbit**  
38,400bps,GGA,GSA,GSV,RMC,VTG  
Produced by Victory Co., LTD.  
  
6G1400001

## I. Install automatically

1. Plug in the GPS device,make sure to connect internet.
2. Click "All apps" — "Windows System" — "Control Panel" — "Device Manager".

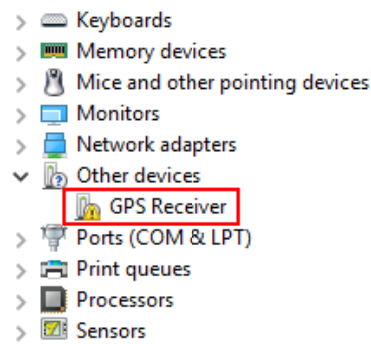


3. Check the "Ports" , "LOCOSYS Technology GPS Receiver" means install

successfully, (COM5)stands for the COM port number of GPS.

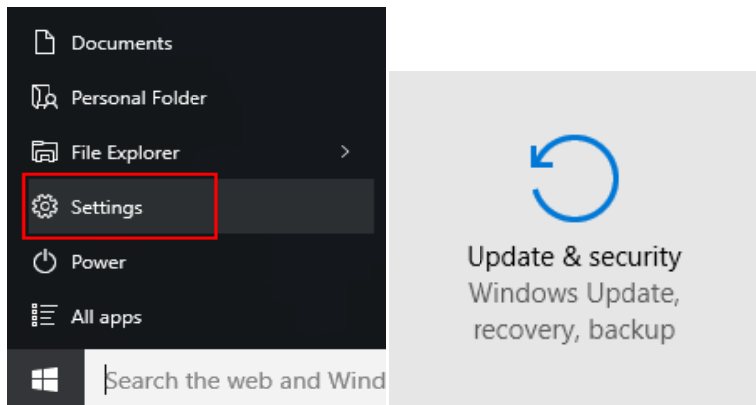


4. If you see an exclamation mark , please refer to “Install manually” .

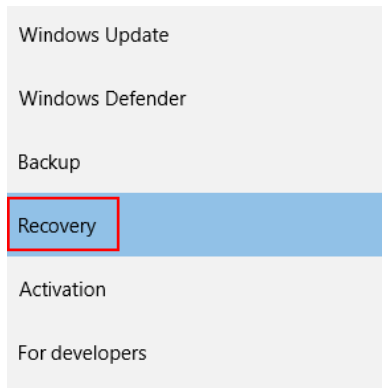


## II. Install manually

1. Open “Settings” —— “Update & security” .

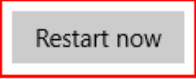


2. Click “Recovery” —— “Restart now” .

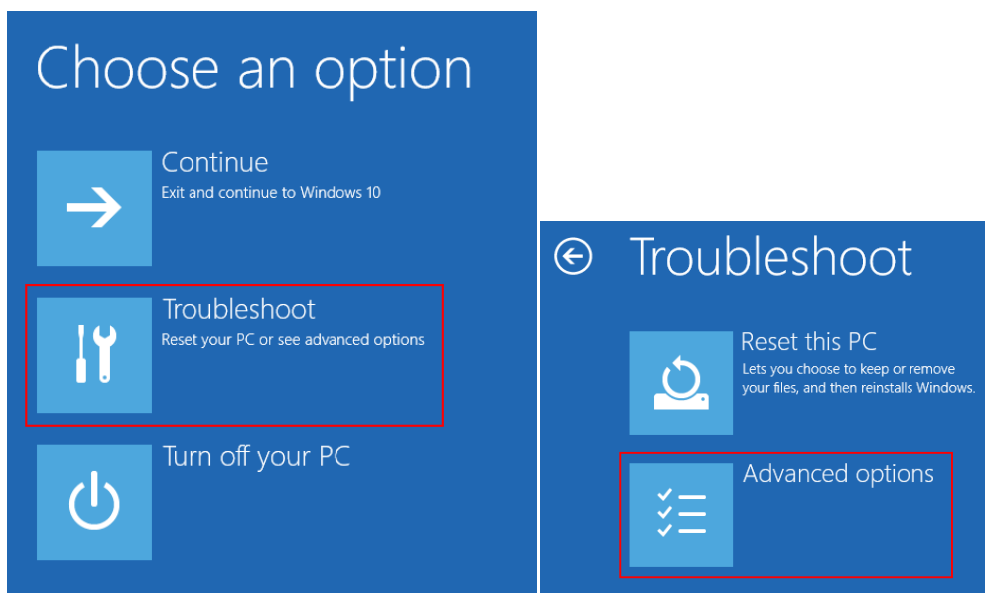


## Advanced startup

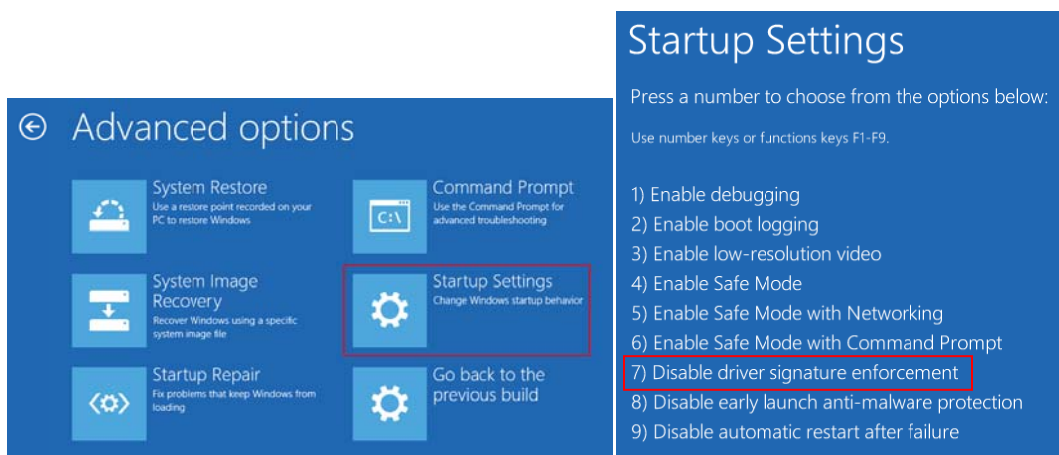
Start up from a device or disc (such as a Windows startup settings, or restore Windows image. This will restart your PC.



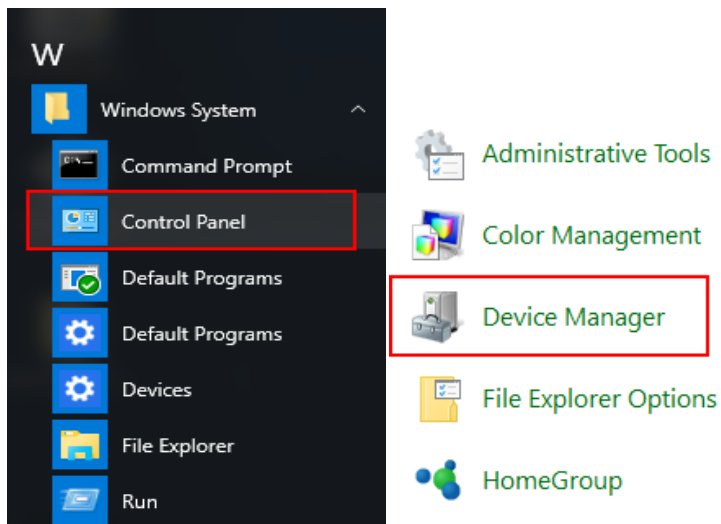
3. After restart, click "Troubleshoot" — "Advanced options".



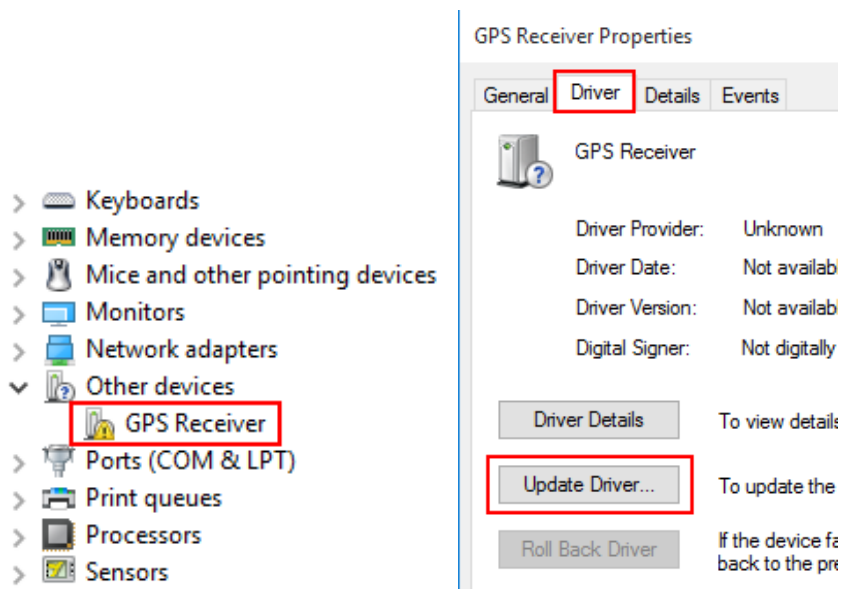
4. Click "Startup Settings" — select 7 "Disable Driver Signature enforcement".



5. Click "All apps" — "Windows System" — "Control Panel" — "Device Manager".



6. Double click "GPS Receiver" —Select "Driver" — "Update Driver" .



7. Click Browse my computer for driver software" .

Update Driver Software - GPS Receiver

How do you want to search for driver software?

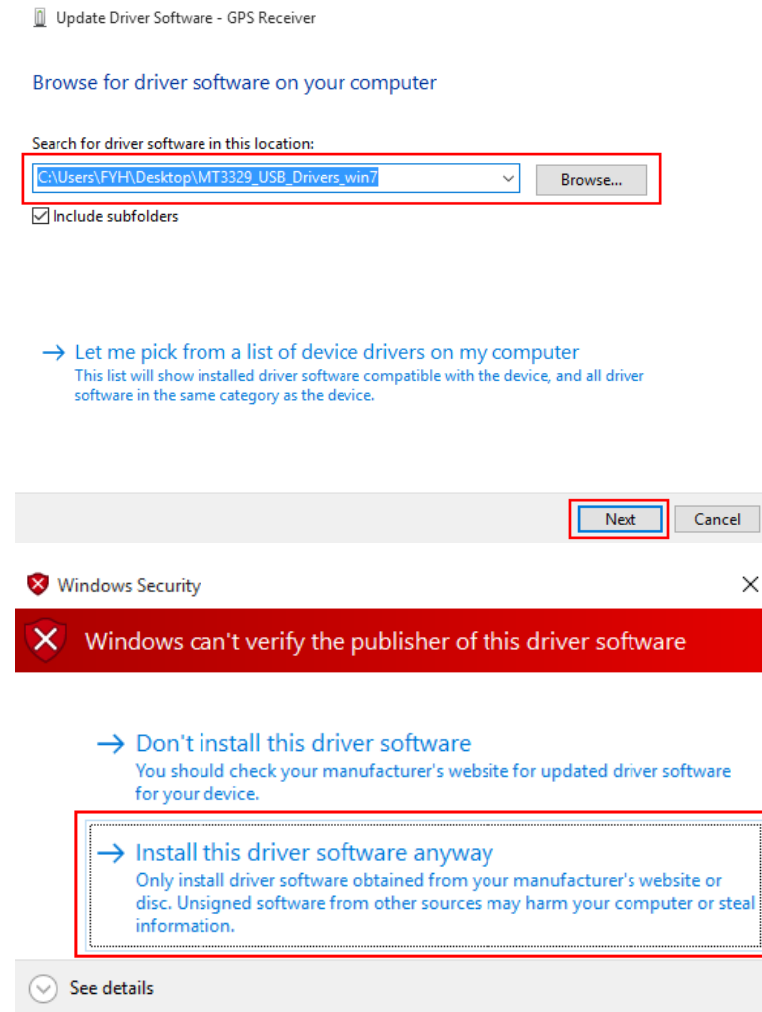
→ Search automatically for updated driver software

Windows will search your computer and the Internet for the latest driver software for your device, unless you've disabled this feature in your device installation settings.

→ Browse my computer for driver software

Locate and install driver software manually.

8. Browse the location of driver, select "Install this drivers software anyway" .



9. Windows has successfully updated the driver, the COM number of GPS followed by.

