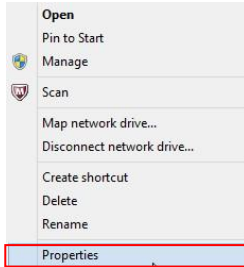
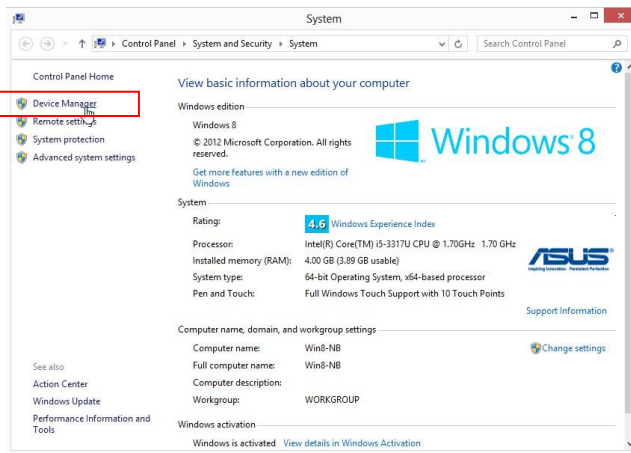


How to install Windows 8 driver

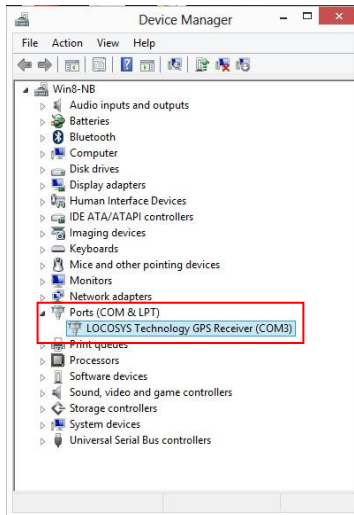
1. Plug in and turn on the device, wait for 1~2 minutes until Windows search for and auto install device driver.
2. Right click on **My computer** icon and select **Properties** to check COM port of your device.



3. Choose Device Manager

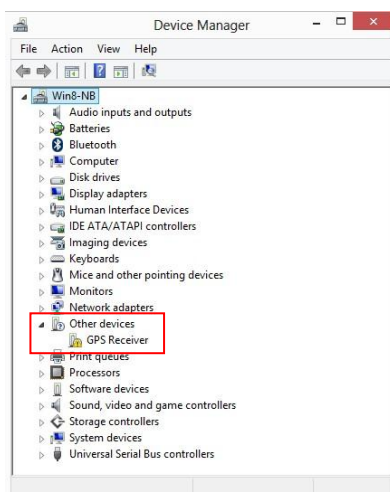


4. Check the driver and com port number at **Ports (COM&LPT)** list.

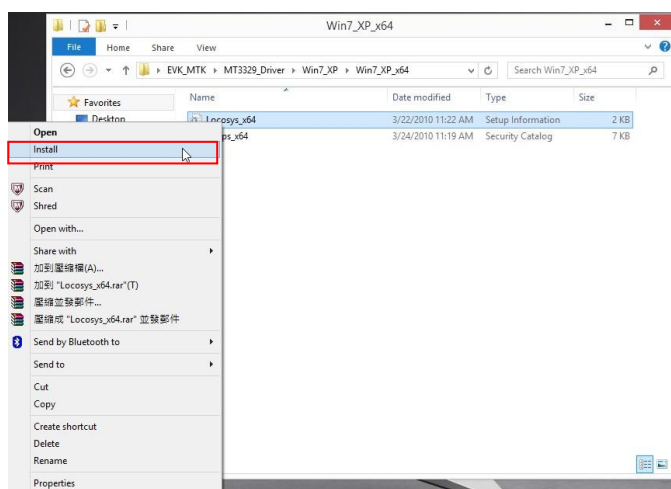


Note: The software will auto detect the com port and connect with the device, If the device fail to connect with the software, you can manually select the com port number in **Software > Config GPS** and connect again.

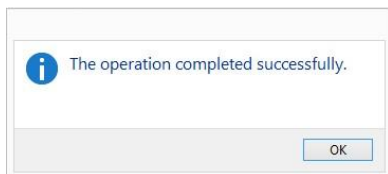
- If Windows 8 doesn't automatically recognize and install the driver, it will show **GPS Receiver** with a yellow exclamation point icon next to it in the **Other Devices** list. In this case you will need to manually install the driver.



- Extract the driver file **EVK_MTK.zip**.
- In **EVK_MTK\MT3329_Driver\Win7_XP\Win7_XP_x64** folder, right-click on **Locosys_x64.inf** and select **Install**.



- A window will pop up when driver has installed successfully.



- Go back to step 1-4 and check if the driver has installed successfully.